

Math is Fun

- ❖ What do you call friends who love math?
Answer: Algebros
- ❖ How is an Artificial Christmas tree like the fourth root of - 68?
Answer: Artificial Christmas tree cannot be formed because it has no real roots.
- ❖ Why did the two 4's skip lunch?
Answer: They already 8 (ate)
- ❖ How does a mathematician induce good behaviour in her children
Answer: The message is "The number you have dialled is imaginary. Please rotate your phone by 90 degrees"
- ❖ What did 2 say to 4 after 2 beat him in a race?
Answer: 2 Fast 4 you.
- ❖ What did the mathematician's parrot say?
Answer: A poly "no meal"
- ❖ Why are you doing your multiplication on the floor?
Answer: You told me not to use tables.

* * * * *



Dr.P.Selvaraj, Alumni
Dept. of Biotechnoloy

Mathematical Marriage

Theoretically you are invited to the problematic marriage of our beloved son.

Mr.Sec A

(Representative of Trigonometry & co.,)

S/o Mr & Mrs. Cos A

(General Manager in Determinants')

Miss.Cosee A

(Accountant in statistics and co.,)

D/o. Mr & Mrs. SinA

(Manager in Dynamic Association)

On 250/100, at Modern Algebra,

Near Parallelogramic group, ar Vector Algebra

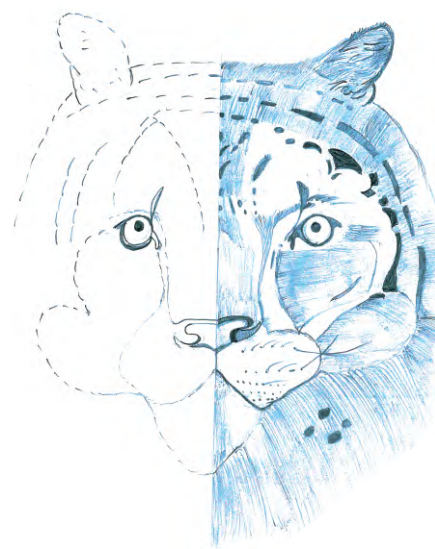
Aalysis - 21

With Best Compliments from

Mrs. & Mr.Hyperbola

M.Kaleeswari,
(Alumni 2008 - 2011 batch)
B.Sc Maths

SYMMETRY



T.Manimegalai
II M.Sc Maths



SKC ALUMNI

Connects 'U' with your classmates

A Newsletter published from : SRI KALISWARI COLLEGE (Autonomous), SIVAKASI - 626 130. TAMILNADU. INDIA

(Autonomous - Co-Educational - Affiliated to Madurai Kamaraj University, Madurai - Re-accredited with (3rd cycle) 'A' grade by NAAC with CGPA of 3.11

A. Meenakshipuram, Anaikuttom Post, Sivakasi - 626 130 ♦ Phone : (04562) 232648, 232264 Fax : (04562) 232264 ♦ E-Mail : kaliswaricollege@gmail.com ♦ College Website : www.kaliswaricollege.org

Volume - 11

Patron : Shri. A.P. Selvarajan, Secretary, Sri Kaliswari College (Autonomous), Sivakasi

September 2020-2021



Editorial Board:

Editor - in- Chief: Dr.S.Krishnamurthy
Principal
Co-ordinator : Prof.S.Alagappan
Co-ordinator, Alumni Association
Editors : Mrs.C.Kavitha
Mrs.A.Sankar Gomathi
Mr.S.Muthukumar

About The College

Sri Kaliswari College is marching ahead on the path of progress under the able guidance of the philanthropists of Sri Kaliswari Trust of Sivakasi. It provides value based quality education to the youth of backward classes of this region. The college is a self financed, Autonomous and Co-Educational Institution affiliated to Madurai Kamaraj University, Madurai. The College is passionately committed to offer quality education and to maintain uncompromising high standards in discipline and decorum.

The college offers an impressive number of 16 under graduate courses, 9 postgraduate In addition, the College offers a Certificate course in Gandhian Thought for all the First year students to inculcate the moral values of truth and non-violence. An additional feather in the cap of the college is the sanctioning of community college by UGC. Today, Sri Kaliswari College is a class by itself, renowned for its academeic excellence.

About the Alumni

Alumni Association of Sri Kaliswari College was formed in the year of 2004-2005 comprising 144 alumni of the first and second batches.

Shri A.P.Selvarajan, Secretary of this institution inaugurated the alumni association on 30th March 2005. In the beginning, the enrollment for the alumni was doe annually but Now they given with the life membership. The alumni visit their alma mater often and several meetings are arranged to create awareness among the outgoing students about their future prospects. An Alumni book bank is created to issue books to our students.

At present, there are twenty seven alumni staff rendering their services to this institution. The newsletter is another milestone in the journey. Right From the inception of the college, the alumni association of the college organizes various fine arts programs for the student community.

Every year the college SKC Alumni Association celebrates the Fine Arts Day.

From the Editorial Board

It is with profound feelings of joy and gratitude that we release the eighth edition of SKC - Alumni into the hands of the academic community at large and particularly the alumni.. This newsletter gives a golden opportunity to nourish you evergreen memories at the SKC campus besides building loyalty towards Alma Mater.

Again, it makes one aware of the academic achievements made in

the institution after the graduation. The Alumni's Significant contribution is to promote, influence and support educational, cultural and social life of their alma mater by organizing a number of events to not only highlight but also to appreciate. we are confident that Alumni Association would play major role in the year to come.

From our Secretary

It is marvelous to find a positive and healthy response from the Alumni every academic year. It shows their love and gratitude towards their Alma mater. The eighth issues of the Alumni Newsletter threw light on energetic and enthusiastic activities of the Alumni Association. The Alumni Association always concentrated on the welfare of the poor and downtrodden in the society, I can feel the humane tendency behind their dedicated and devoted service, our Alumni's creativity and histrionic potentials are fostered and nurtured through their contribution of articles to Association which will continue its endeavors with the same spirit in the ensuing years and I convey my best wishes to the Alumni and the Association

From our Principal

The Alumni Association of Sri Kaliswari College is being gradually strengthened by the regular activities and timely sponsorships. Let us hope to bind the out gone Kaliswarians by the strong ropes, newsletters and the annual meetings which will give the feeling of oneness.

Alumni Fund Details (2020-2021)

Name & Class	Amount (Rs.)
A.Jothika – III.B.Sc(Maths)	7050
P.Sornalakshmi – III B.Sc(Maths)	7050
R.Alaghunayanan - III B.Sc(Maths)	7050
B.Boobala Moorthi - III B.Sc(Maths)	7050
M.Ganeshkumar - III B.Sc(Maths)	7050
J.Kansul Ribath – II BBA	7400
S.Angalaeswari – II B.Sc(Chemistry)	7470
M.Vignesh – II B.Sc(Maths)	7620
S.Poonkodi – II B.Sc(Chemistry)	7670
D.Mathan – II B.Sc(Maths)	8300
M.Muthumari - II B.Sc (Maths)	8300
M.Saraswathi - II B.Sc(Maths)	8360
P.Parani Sankar - II B.Sc(IT)	10590
K.Rukshanabarvin - II B.Sc(IT)	11550
G.Rajalakshmi - I B.Sc(BT)	12150
S.Kalaivani - I B.Sc(IT)	12150
A.Sriram - I B.Sc(IT)	12250
H.Jamuna - I B.Sc(Botany)	12298
M.Kesavan - II B.Sc(CS)	12980
G.Adhi Narayana Moorthi - I B.Sc(IT)	13670
L.Nallathambi – II BCA	14370
K.Pandi Priya – II B.Sc(Maths)	15980
A.Abishek – II B.Com	16000

Total Count : 23
Total : 234,358

Alumni Interactions - 2020 - 2021

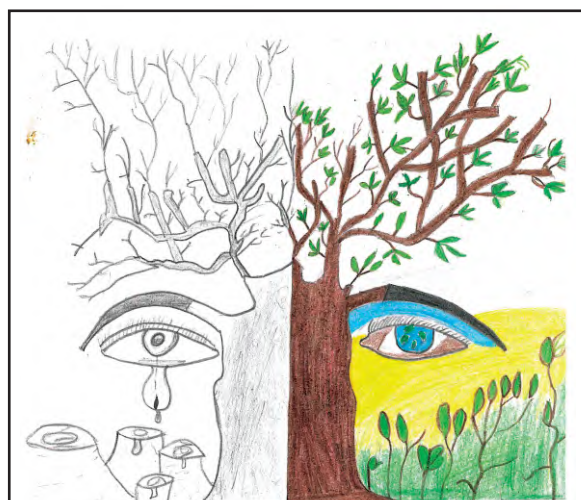


Articles - Alumni

பணி

உறவுகளை
உணர்விழக்கச் செய்யும்
உரிமை கொண்ட உறவு

தி.விக்டர் அதிசயம்



MATHEMATICAL ONCOLOGY: A PAST, PRESENT AND FUTURE

Cancer is one of the leading causes of disease related death worldwide. In recent years, rapid increase in the molecular understanding of cancer has unravelled significant additional complexity of the disease. Although large amounts of data on cancer genetics and molecular characteristics are available and accumulating with increasing speed, adequate interpretation of these data still represents a major bottleneck. This is exactly where mathematics can be applied to oncology: Though mathematics modeling of complex biological processes able to gain novel, unprecedented medical insights.

The Mathematical oncology is a use of mathematics, modeling, and simulation to study cancer in at once both an old and a new field of research. Its roots date back hundreds of years, to the earliest days of the study of calculus. The Principles of rate of change and differential equations have been used to model and predict the uncontrolled proliferation of cancer cells and the effects of treatment for decades. Today, with the dawning of the era of routine cancer genome sequencing and the resulting surge of data, have necessitated new mathematical methods and modeling approaches, these principles have been given new life and found new applications, Over the past several

decades, theoretical work in mathematical oncology and more generally, mathematical biology has provided a framework in which to apply these theoretical constructs and challenge them with biologic data to make predictions about cancer progression.

The field of application of mathematical model include the analysis of biological concepts and medical hypotheses about cancer evolution, and the prediction of clinical outcomes using existing clinical and molecular information. On the other hand, the medical applications give rise to mathematical challenges, which can lead to new methods and algorithms in various fields of mathematics, like data analysis, mathematical modeling and machine learning. Mathematical models can now, more than ever, be directly applied to real scenarios and readily tested using large amounts of biologic and clinical data. In many ways, the era of big data has enabled an era of big theory to meet both the conceptual and practical challenges of analyzing, and to a limited extent understanding, big data. Therefore, applying mathematics in the field of oncology will facilitate data interpretation and improve our understanding of carcinogenic processes.

K.Kaleeswari
Alumni (Batch 2011 - 2013) PG Maths

Numbers Talks Hand Signals



I have an answer and a strategy



I am thinking



I have another answer



I agree because....



I disagree because....

MATH TALK

Solve

I can use method Math to solve the problem.

Explain

I can explain by words to talk about what strategy I used to solve the problem.

Question

I can ask questions to my Peers to get a better Understanding of how they solved their problem

Justify

I can justify my answer by answering to the questions asked about solving my maths problem