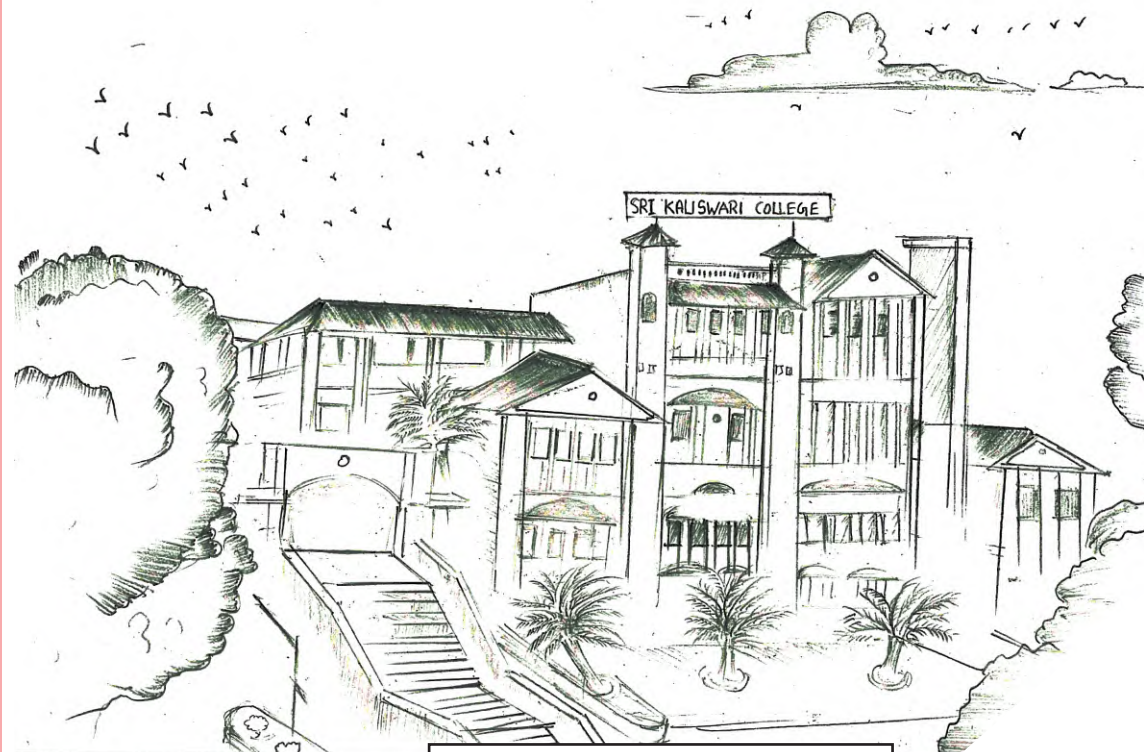


Math is Fun

- ❖ What do you call friends who love math?
Answer: Algebros
- ❖ How is an Artificial Christmas tree like the fourth root of - 68?
Answer: Artificial Christmas tree cannot be formed because it has no real roots.
- ❖ Why did the two 4's skip lunch?
Answer: They already 8 (ate)
- ❖ How does a mathematician induce good behaviour in her children
Answer: The message is "The number you have dialled is imaginary. Please rotate your phone by 90 degrees"
- ❖ What did 2 say to 4 after 2 beat him in a race?
Answer: 2 Fast 4 you.
- ❖ What did the mathematician's parrot say?
Answer: A poly "no meal"
- ❖ Why are you doing your multiplication on the floor?
Answer: You told me not to use tables.

* * * * *



Dr.P.Selvaraj, Alumni
Dept.of Biotechnoloy

Mathematical Marriage

Theoretically you are invited to the problematic marriage of our beloved son.

Mr.Sec A

(Representative of Trigonometry & co.,)

S/o Mr & Mrs. Cos A

(General Manager in Determinants')

Miss.Cosee A

(Accountant in statistics and co.,)

D/o. Mr & Mrs. SinA

(Manager in Dynamic Association)

On 250/100, at Modern Algebra,

Near Parallelogramic group, ar Vector Algebra

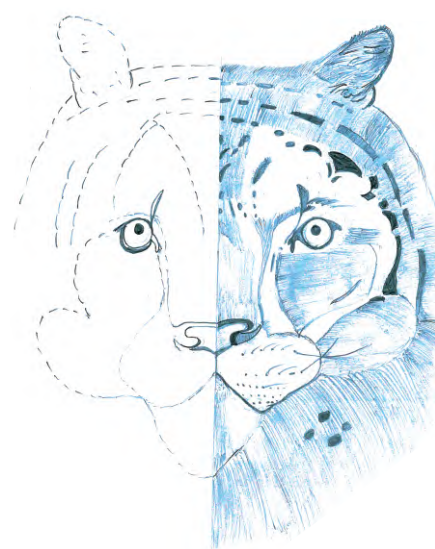
Aalysis - 21

With Best Compliments from

Mrs. & Mr.Hyperbola

M.Kaleeswari,
(Alumni 2008 - 2011 batch)
B.Sc Maths

SYMMETRY



T.Manimegalai
II M.Sc Maths



SKC ALUMNI

Connects 'U' with your classmates

A Newsletter published from : **SRI KALISWARI COLLEGE (Autonomous), SIVAKASI - 626 130. TAMILNADU. INDIA**

(Autonomous - Co-Educational - Affiliated to Madurai Kamaraj University, Madurai - Re-accredited with (3rd cycle) 'A' grade by NAAC with CGPA of 3.11

A. Meenakshipuram, Anaikuttom Post, Sivakasi - 626 130 ♦ Phone : (04562) 232648, 232264 Fax : (04562) 232264 ♦ E-Mail : kaliswaricollege@gmail.com ♦ College Website : www.kaliswaricollege.org

Volume - 10

Patron : Shri. A.P. Selvarajan, Secretary, Sri Kaliswari College (Autonomous), Sivakasi

September 2019-2020



Editorial Board:

Editor - in- Chief: **Dr.S.Krishnamurthy**
Principal
Co-ordinator : **Prof.S.Alagappan**
Co-ordinator, Alumni Association
Editors : **Mrs.C.Kavitha**
Mrs.A.Sankar Gomathi
Mr.S.Muthukumar

About The College

Sri Kaliswari College is marching ahead on the path of progress under the able guidance of the philanthropists of Sri Kaliswari Trust of Sivakasi. It provides value based quality education to the youth of backward classes of this region. The college is a self financed, Autonomous and Co-Educational Institution affiliated to Madurai Kamaraj University, Madurai. The College is passionately committed to offer quality education and to maintain uncompromising high standards in discipline and decorum.

Our college offers an impressive number of 16 undergraduate courses, 9 postgraduate courses and 5 M.Phil. programmes. In addition, the College offers a Certificate course in Gandhian Thought for all the First year students to inculcate the moral values of truth and non-violence. An additional feather in the cap of our college is the sanctioning of community college by UGC. Today, Sri Kaliswari College is a class by itself, renowned for its academic excellence.

About the Alumni

Alumni Association of Sri Kaliswari College was formed in the year of 2004-2005 comprising 144 alumni of the first and second batches.

Shri A.P.Selvarajan, Secretary of this institution inaugurated the alumni association in a function held on 30th March 2005. The alumni were enrolled annually in the beginning. Now they enrolled annually in the beginning. Now they were enrolled annually in themselves as life members. The alumni visit their alma mater often and several meetings are arranged to create awareness among the outgoing students about their future prospects. An Alumni book bank is created to issue books to our students.

At present, there are twenty seven alumni staff rendering their services to this institution. The newsletter is another milestone in our journey. From the inception of the college, the alumni association of our college and fine arts programs for the student community.

Every year our college SKC Alumni Association celebrates the Fine Arts Day.

From the Editorial Board

It is with profound feelings of joy and gratitude that we release the eighth edition of SKC - Alumni into the hands of the academic community at large and particularly the alumni. of course this newsletter gives a golden opportunity to nourish you evergreen memories at the SKC campus besides building loyalty towards Alma Mater.

Again, it makes you aware of the academic achievements made in

you institution after your graduation. The Alumni's Significant contribution to promote, influence and support educational, cultural and social life of their alma mater by organizing a number of events have not only highlighted but also appreciated. we are confident that Alumni Association would play major role in more activities in the year to come also.

From our Secretary

It is marvelous to find a positive and healthy response from our Alumni every academic year. It shows their love and gratitude towards their Alma mater. The eighth issues of the Alumni Newsletter throw light on energetic and enthusiastic activities of the Alumni Association. Our Alumni Association always concentrated on the welfare of the poor and downtrodden in the society, I can feel the humane tendency behind their dedicated and devoted service, our Alumni's creativity and histrionic potentials are fostered and nurtured through their contribution of articles to Association will continue its endeavors with the same spirit in the ensuring years and I convey my best wishes to the Alumni ans the Association

From our Principal

The Alumni Association of Sri Kaliswari College is being gradually strengthened by the regular activities and timely sponsorships. Let us hope to bind the out gone Kaliswarians by the strong ropes, newsletters and the annual meeting s which give the feeling of oneness.

SKC Alumni

Teacher's Day Celebration

On 5th September 2019, the Alumni Association of our College celebrated the Teachers Day. As a part of Teachers Day Celebration, Competitions were conducted for the faculty members and the winners were awarded prizes. Prof. Mr.S.Alagappan, Senior Faculty, Department of Chemistry and Mrs.Pitchaikani Prabakaran, COE, Sri Kaliswari College (Autonomous), Sivakasi were the Chief Guests.

Alumni Fund Details (2019-2020)

Name & Class	Amount (Rs.)
G.Thamaraiselvi - III B.Sc(CS)	5050
J.Muthamilarasi - II M.A(Eng)	5565
T.Nagoormeeran - II M.Sc(Botany)	5610
K.Kalaiselvan - II M.Sc(Botany)	5660
K.Mahalakshmi - II BCA	7200
P.Murugan - III B.Com	7225
T.Karthika Devi - II B.Com	7480
M.Mahalakshmi - I M.Sc(Chemistry)	7485
M.Paramasivam - II BBA	7680
K.Muniyasamy - III B.Com	8050
A.Jothika - III.B.Sc(Maths)	8050
M.Ganeshkumar - III.B.Sc(Maths)	8100
J.Kansul Ribath - II BBA	8200
S.Angalaeswari - II B.Sc(Chemistry)	8210
S.Manimala - II B.Com	8350
K.Pandi Priya - II B.Sc(Maths)	9425
R.Vignesh - I.B.Sc(IT)	9500
M.Kartheeswaran - I BBA	9550
M.Mareeswari - III B.Sc(BT)	9550
S.Muniswari - III B.Sc(IT)	9550
P.Gangatharan - II BCA	9855
S.Sundarammal - III BBA(CA)	10050
G.Rajapandi - III BBA(CA)	10050
R.Suriya Prakash - III BCA	10050
K.Karthika - I B.Sc(Botany)	10100
R.Mukesh Kannan - II B.A(Eng)	10380
V.Jeyalakshmi - II BCA	11100
V.Meenatchi - II BCA	11100
S.Rajakumari - II BCA	11100
S.Santhiya - I B.Sc(CS)	11300
I.Jeyaprabha - I B.Sc(CS)	11600
M.Vinothini - I B.Sc(CS)	12550
R.Gayathri - II BCA	12980
N.Pandimeena - III B.Com	13250
R.Pavithra - II B.Sc(Maths)	13550
L.Nallathambi - II BCA	14400
M.Saravana - I B.Sc(CS)	15650
R.Alaghunayanan - III B.Sc(Maths)	16715

Total Count : 38
Total : 369,770

Alumni Interactions (2019 - 2020)



Department of English and Alumni Association Jointly organize a Career Counseling Programme on Personal Grooming and Interview Techniques on 17.02.2020. Mr.K.Vincent (Alumni 2011 - 2014), Senior Executive HR, Santres Engineering Pvt. Ltd., Chennai.



Department of Mathematics and Alumni Association Jointly organize a Career Counseling Programme on Methodology of Preparing for Competitive Examinations on 21.02.2020. Mr.D.Steephen Chellakani (Alumni 2011 - 2013), PG Assistant, Vellankanni Matha Hr.Sec.School, Sivakasi.

Articles - Alumni



உணர்வு
உறவுகளை
உணர்விழக்கச் செய்யும்
உரிமை கொண்ட உறவு
தி.விக்டர் அதிசயம்

SKC Alumni

MATHEMATICAL ONCOLOGY: A PAST, PRESENT AND FUTURE

Cancer is one of the leading causes of disease related death worldwide. In recent years, rapid increase in the molecular understanding of cancer has unravelled significant additional complexity of the disease. Although large amounts of data on cancer genetics and molecular characteristics are available and accumulating with increasing speed, adequate interpretation of these data still represents a major bottleneck. This is exactly where mathematics can be applied to oncology: Though mathematics modeling of complex biological processes able to gain novel, unprecedented medical insights.

The Mathematical oncology is a use of mathematics, modeling, and simulation to study cancer is at once both an old and a new field of research. Its roots date back hundreds of years, to the earliest days of the study of calculus. The Principles of rate of change and differential equations have been used to model and predict the uncontrolled proliferation of cancer cells and the effects of treatment for decades. Today, with the dawning of the era of routine cancer genome sequencing and the resulting surge of data that have necessitated new mathematical methods and modeling approaches, these principles have been given new life and found new applications. Over the past

several decades, theoretical work in mathematical oncology and more generally, mathematical biology has provided a framework in which to apply these theoretical constructs and challenge them with biologic data to make predictions about cancer progression.

The field of application of mathematical model include the analysis of biological concepts and medical hypotheses about cancer evolution, and the prediction of clinical outcomes using existing clinical and molecular information. On the other hand, the medical applications give rise to mathematical challenges, which can lead to new methods and algorithms in various fields mathematics, like data analysis, mathematical modeling and machine learning. Mathematical models can now, more than ever, be directly applied to real scenarios and readily tested using large amounts of biologic and clinical data. In many ways, the era of big data has enabled an era of big theory to meet both the conceptual and practical challenges of analyzing, and to a limited extent understanding, big data. Therefore, applying mathematics in the field of oncology will facilitate data interpretation and improve our understanding of carcinogenic processes.

K.Kaleeswari
Alumni (Batch 2011 - 2013) PG Maths

Numbers Talks Hand Signals



I have an answer and a strategy



I am thinking



I have another answer



I agree because....



I disagree because....

MATH TALK

Solve



I can use method Math to solve the problem.

Explain



I can my words to talk about what strategy I used to solve the problem.

Question



I can ask questions of my Peers to get a better Understanding of how they solved their problem

Justify



I can justify my answer by answering questions my peers have asked about solving my maths problem